

June 2009

# PolyWorks® V11 Now Shipping!

PolyWorks V11 has hit the market in March 2009 and since then is available for download from the InnovMetric Technical Support Zone. PolyWorks users with a valid support/maintenance contract as of March 15 have access to this new release at no additional cost.

In June, InnovMetric will physically ship PolyWorks V11 boxes to all supported customers and distributors. The box will also include a "PolyWorks Learning Guides" DVD, a video-based learning tool that offers exercises divided in five categories:

- Beginner's Guide (PolyWorks/Modeler™ and PolyWorks/Inspector™)
- IMView Learning Guide
- Probing Learning Guide
- V11 New Tools
- PolyWorks/Surveyor™ Guide (for long-range applications)

This Learning Guides DVD, which contains over 100 videos, comes with the "PolyWorks sheet metal part" in order to allow users to perform the various PolyWorks exercises.

To request a demonstration or a quotation for the PolyWorks V11 software suite, [click here](#).



### PolyWorks - Probing the Future at CMSC 2009

On July 20-24, 2009, InnovMetric will be exhibiting at booth 310 at the 25th annual CMSC conference, the most focused annual event for close tolerance metrology industry professionals.

As part of CMSC 2009, InnovMetric will hold a special event called "PolyWorks - Probing the Future"

**Date:** July 21  
**Time:** 4:00-6:00PM  
**Location:** Rose Room, Louisville Marriott

Meet us at our booth on Tuesday and ask for your invitation card. The presentation will be followed by a cocktail reception.

[Click here](#) for more information about these events.



## Recap of the PolyWorks Detroit User Meeting 2009



On April 21-23, 2009, InnovMetric Software held the 2009 PolyWorks Detroit User Meeting to introduce the new PolyWorks V11 software suite.

At the main event, Marc Soucy, President of InnovMetric, presented PolyWorks V11 and shared his vision for the future. The first day was filled with presentations on the new features and examples of real-life applications. Days two and three offered training sessions on the newest PolyWorks V11 tools.

Participants also visited the 3D scanner expo and discovered the latest technologies of 11 scanner manufacturers and service providers:

- Accurex Measurement
- Applied Precision
- Capture 3D
- Creaform
- Exact Metrology (Breuckmann)
- FARO
- Hexagon Metrology (Romer, Leica, CogniTens)
- KonicaMinolta
- NDI
- Steinbichler
- 3D ScanIT

This event was a great opportunity to learn and to network with industry associates. We look forward to meeting you at the next PolyWorks User Meeting.



### Upcoming Events

June 16-19  
Mach-Tool 2009  
Poznań, Poland

June 25-28  
Automotive Manufacturing 2009  
Bangkok, Thailand

July 20-24  
CMSC 2009  
Louisville, KY, USA

September 14-18  
MSV Brno 2009  
Brno, Czech Republic

September 22-24  
Quality Expo 2009  
Chicago, IL, USA

For more information on these events, [click here](#)

## New PolyWorks/Surveyor™ Package



InnovMetric is proud to announce the release of a new PolyWorks/Surveyor software package dedicated to surveying applications. PolyWorks/Surveyor consists of two modules. The IMAlign scan alignment module offers renowned best-fit 3D scan alignment capabilities, enhanced with the recent addition of target extraction tools and alignments constrained by targets or leveling.

IMSurvey is a new module based on the IMInspect kernel that offers a broad set of large dataset handling and visualization, feature extraction, surface monitoring, and dimensional measurement tools, dedicated to the needs of surveyors.

For more information on the PolyWorks/Surveyor package, you can [download the brochure here](#).



The PolyWorks Web site for Surveying applications has been updated and now offers a graphical style that is harmonized with the Manufacturing Web site.

This Web site offers a video gallery and a Case Studies section that shows some of the spectacular work that customers in the survey field have achieved using PolyWorks.

Visit this new site at [www.innovmetric.com/surveying](http://www.innovmetric.com/surveying)

### New PolyWorks Distributors

**TriMet LLC**  
**Territory:** KS, OK, MO, AR, IL, IA, NE  
**PolyWorks bundled with:** Metris articulated arms/MCA & ModelMaker scanners & KScan systems, API trackers and scanners, and Nub3d TRIPLE white light digitizers  
**Contact:** [Tim Dobrinich](mailto:Tim.Dobrinich@trimetgroup.com)  
[www.trimetgroup.com](http://www.trimetgroup.com)

**Hexagon Metrology Nordic AB**  
**Territory:** Sweden, Norway, Finland, Denmark, and Iceland  
**PolyWorks bundled with:** PCMM systems from ROMER, Romer Arm, Leica T-Scan, Leica T-Probe, DEA, and CogniTens  
**Contact:** [Magnus Lindbom](mailto:Magnus.Lindbom@hexagonmetrology.se)  
[www.hexagonmetrology.se](http://www.hexagonmetrology.se)

**IMT Metrologia Industrial Ltda**  
**Territory:** Brazil  
**PolyWorks bundled with:** Faro ScanArm, Faro Laser Tracker, and FaroArm  
**Contact:** [Juliano Ferraioli](mailto:Juliano.Ferraioli@industrialmetrology.com)  
[www.industrialmetrology.com](http://www.industrialmetrology.com)

**Kréon Technologies**  
**Territory:** Europe  
**PolyWorks bundled with:** Kréon 3D scanners and arms  
**Contact:** [Thierry Rebillard](mailto:Thierry.Rebillard@kreon3d.com)  
[www.kreon3d.com](http://www.kreon3d.com)

## "How to" Tutorials in the Technical Support Zone

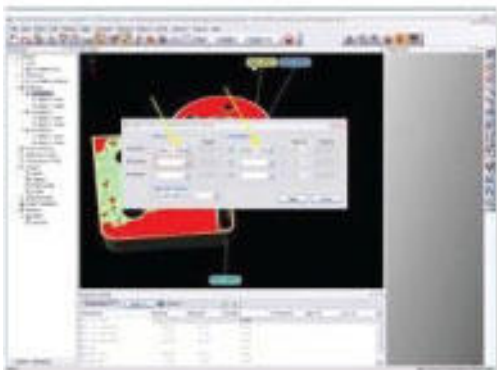


A new "How to" section is currently available under the Tutorial tab of InnovMetric's Technical Support Zone, offering tutorials that describe step-by-step processes for typical inspection and reverse-engineering tasks.

Here are some of the "How to" tutorials that are now available:

- Extract Features from CAD and Auto extract on Data
- Measure Boundary Scan Deviation
- Measure Mesh Boundary Deviation
- Align Data to CAD: 3 pairs of perpendicular planes
- Create Macros and Customize Visual Layout
- Report Results to Excel
- Clean up data automatically

To download "How to" tutorials, log into the Technical Support Zone [here](#).



### Tips and Tricks E-mails

In June 2009, InnovMetric's Technical Support Team will start sending weekly "Tips and tricks" e-mails to all PolyWorks users and distributors. These e-mails will provide a short description of specific tools and features of PolyWorks V11.

You can download the first edition of the "Tips and tricks" PolyWorks V11 series [here](#).